



## SIMWINGS COMMUNITY SUPPORT PROJECT – SPONSORED GROUP FLIGHT

### ROUND THE ALPS CHALLENGE

Welcome to this first of many, sponsored event "Round the Alps" Challenge. Thank you for registering and being part of this fundraiser.

We will be flying around the French and Swiss alps taking in some of the most scenic and breathtaking views of this magnificent part of Europe.

Enroute we will do some "touch and go's", taking part in a precision landing competition and flying into one of the world's most challenging Airports, LFLJ – Courchevel, before circling back through some epic deep twisting valleys, returning to our starting point at Geneva.

We will be all be flying in the classic single-engine Robin DR401 which is a free download from Aerobask (link in event details below).

We will be all connected to VATSIM and flying VFR. So, you may need to brush up on your VFR communication skills. We are hoping that any online ATC will let us fly without too much headache as most of the route will be flown at a very low 2500ft rising to 6500ft to land at Courchevel, followed by a climb up to approximately 8500ft to escape the mountains and head back down into the valleys.

To enjoy the best VFR flying experience and delight in those spectacular views use ortho4xp and download these 4 files at ZL16 would be fine or if you have the disk space ZL17;

+45+005

+45+006

+46+005

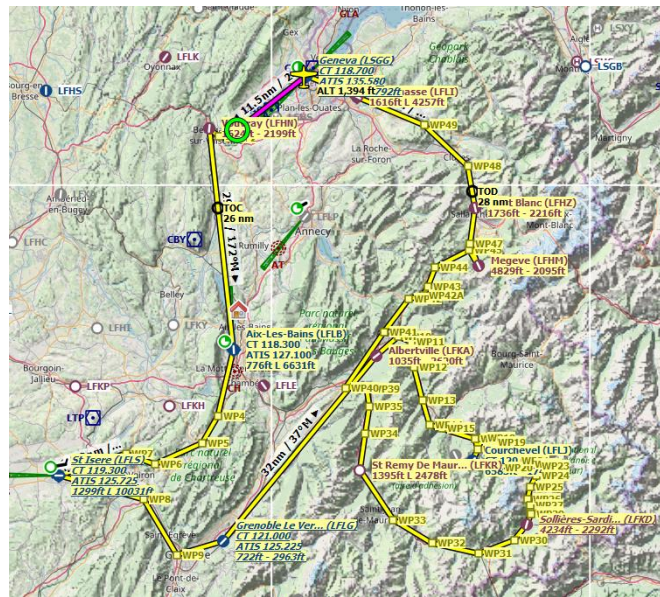
+46+006

Links to all airport sceneries are in the event details sections and are downloaded free of charge. All links provided can be found in the "forums.x-plane.org" website OR "XPFR.org". XPFR will ask you to complete a FREE registration to download sceneries. Of course, if you already have payware scenery installed that's fine too.

The LFKA - Albertville scenery download (from XPFR) is required if you wish to try the precision landing as it has the zones marked on the touchdown point.

CONTINUED ON NEXT PAGE ...

## MAP OF ROUTE



## EVENT DETAILS

EVENT DATE: Saturday 11<sup>th</sup> April 2020 @17:00 zulu (Provisional – Subject to change)

ENTRANCE FEE: £5 (all fees go to the fund) The donation link will allow you donate more if you so wish:-)

Please add the word "Groupflight" to notes in your Paypal payment.

If you wish to take part in this epic Group Flight, but are 'seriously' unable to afford the registration fee, please contact Simwings Support for assistance at: [info@simwingsupport.com](mailto:info@simwingsupport.com) It is after all, what Simwings is all about; 'supporting the community'.

LINK TO REIGISTRATION: <https://www.simwingsupport.com/events/>

SPONSORSHIP: If you can raise any sponsors for your flight that would be great, all proceeds will go to the fund. Please click on the link to download a sponsorship form. [http://simwingsupport.com/wp-content/uploads/2020/03/sponsor\\_form.pdf](http://simwingsupport.com/wp-content/uploads/2020/03/sponsor_form.pdf)

Aerobask Robin DR401 free download : <https://forums.x-plane.org/index.php?/files/file/45373-aerobask-robin-dr401-cdi-155/>

## LIST OF AIRPORTS ON ROUTE

Routing : LSGG→LFLN→LFLB→LFLS→LFLG→LFKA→LFLJ→LFLD→LFLH→LFLI→LSGG

CONTINUED ON NEXT PAGE....

## LINKS TO ALL SCENERIES

LSGG – GENEVA, SWITZERLAND – EVENT START AND FINISH (MAY HAVE SWISS ATC)



Link to scenery : <https://forums.x-plane.org/index.php?/files/file/41230-lsgg-geneva-airport-switzerland%E2%80%8E-v2/>

LFHN – BELLEGARDE VOUVRAY, FRANCE (TOUCH & GO)



Link to scenery : [https://xpfr.org/?body=scene\\_accueil&sc=227](https://xpfr.org/?body=scene_accueil&sc=227)

---

LFLB – CHAMBERY AIX-LES-BAINS, FRANCE (TOUCH & GO)



Link to scenery : <https://forums.x-plane.org/index.php?/files/file/22157-lflb-chambery-airport-france/>

---

LFLS – ST ISERE, FRANCE (TOUCH & GO)



Link to scenery: <https://forums.x-plane.org/index.php?/files/file/44125-lfls-grenoble-isere-10/>

CONTINUED ON NEXT PAGE....

---

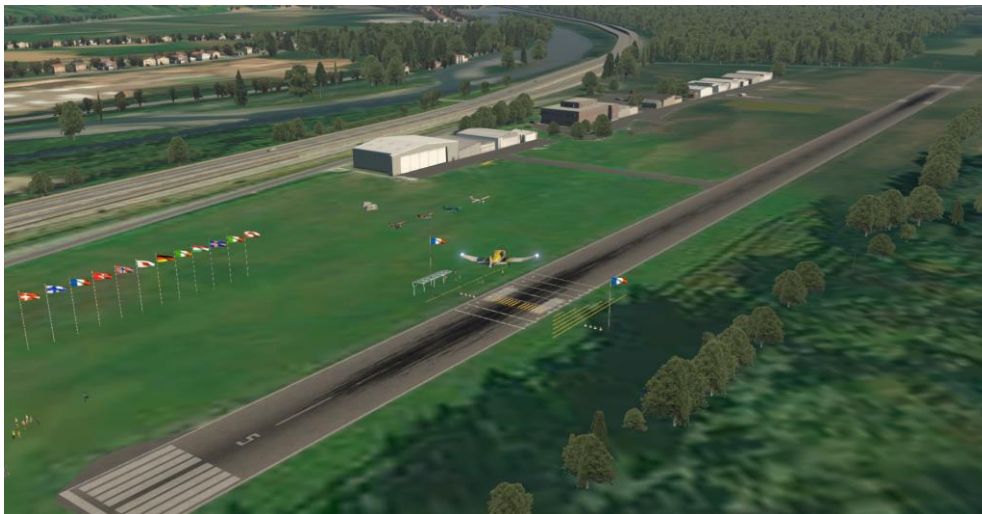
LFLG – GRENOBLE LE VERSOUD, FRANCE (FULL STOP – REGROUP AND PREP FOR LFKA)



Link to scenery: [https://forums.x-plane.org/index.php?/files/file/45505-aerodrome-lflg-grenoble-le\\_versoud-xpfr/](https://forums.x-plane.org/index.php?/files/file/45505-aerodrome-lflg-grenoble-le_versoud-xpfr/)

---

LFKA – ALBERTVILLE, FRANCE (PRECISION LANDING COMPETITION)



Link to FREE scenery for precision landing comp:

<https://forum.aerosoft.com/index.php?/files/file/4620-albertville-lfka-for-x-plane-11/>

If you wish you can install the precision landing LUA script also on this page to have your score calculated automatically...this does require you to calibrate the DR401 (which is easy to do ) just follow the instructions on the webpage

Will require you to sign up to aerosoft forum (free) to download

Or FREE if you signed up to XPFR go here: [https://www.xpfr.org/?body=scene\\_accueil&sc=45](https://www.xpfr.org/?body=scene_accueil&sc=45)

OR use the regular gateway scenery in xplane

CONTINUED ON NEXT PAGE ....

---

LFLJ – COURCHEVEL, FRANCE – VIEW IS ORBX SCENERY



Link to FREE scenery: <https://forums.x-plane.org/index.php?/files/file/24720-lflj-courchevel/>

OR Payware Orbx scenery: <https://orbxsystems.com/forum/topic/180551-introducing-lflj-courchevel-altiport-for-x-plane-11/>

OR use the regular gateway scenery in xplane

---

LFKD – SOLLIÈRES-SARDIÈRES, FRANCE (TOUCH & GO / FULL STOP)



Link to scenery : <https://forums.x-plane.org/index.php?/files/file/35444-lfkd-sollières-sardières-france/>

CONTINUED ON NEXT PAGE...

---

LFHM – MEGEVE, FRANCE –(FULL STOP – WATCH OUT FOR THE DISPLACED THRESHOLD)



Link to scenery: <https://forums.x-plane.org/index.php?/files/file/53215-lfhm-megeve-france/>

---

LFHI – ANNEMASSE, FRANCE (TOUCH & GO)



Link to scenery: <https://www.xpfr.org/?pop=download&sc=53>

Will require sign FREE sign up to XPFR.org

YOU ARE ALL DONE 😊